



KUNA MARCHING INVITATIONAL

Kuna High School
637 East Deer Flat Road
Kuna, ID 83634
Saturday, October 7th, 2023



Event Host Contacts	USBands Contacts
<p>Skyler Krall, <i>Director of Bands</i> 801-645-6714 skrall@kunaschools.org</p>	<p>Chloe Spencer, <i>Event Operations Manager</i> (610) 230-7891 cspencer@usbands.org</p> <p>Ginny Kraft, <i>Ensemble Relations</i> (610) 379-2848 vkraft@usbands.org</p>

SPECTATOR INFORMATION

Tickets: General Admission tickets will be **\$9 at online presale** or **\$12 at the door**.

Students and children 17 and under are free.

No Cash. Credit/Debit/ApplePay/Google Pay Only, please.

Purchase Tickets at the Discounted Rate:

<https://www.showpass.com/kuna-marching-invitational-23/>

Spectators will be hand-stamped at the gate for re-entry.

Spectator Parking: Volunteers and spectators will park in the parking lot on the WEST side of Kuna High School near the football stadium.

Restrooms: Volunteers and spectators may use the restrooms near the football stadium connected to the concessions building.

Concessions: Concessions will be located at the KHS Stadium concessions building, directly behind the spectator stands. All proceeds go to the Kuna Band program.

ENSEMBLE INFORMATION

Bus & Equipment Vehicle Parking: Upon arrival to KHS, entrances and exits will be marked and guides will be available to direct. Buses and equipment trailers will be parked on a first-come, first-served basis in the parking lot on the EAST side of Kuna High School near the tennis courts. Props may be dropped off on the blacktop on the west side of the gym so that they are closer to the field. *See map for exact location.*

Warm Up: The two warmup areas for music are located north of the main building (northwest from the bus parking lot). Each band will have a scheduled time to use the music warmup area. A grass field is also available for non-music warmup purposes. It is located directly north of the bus parking lot. Please be considerate of other groups as you use the field.

Performer Restrooms: Upon arrival, band members may use the restrooms in the Arena foyer.

Field Surface: The field is grass and will have high school hashes present. There is a track.

Power on Field: There will be an electric cord with a power strip on the track at the 50-yard line.

Retreat/Critique: Drum Majors and Captains are to report to the field entrance gate before the final band performs.

Meet & Greet: Meet & Greet (formally Critique) will be held in the KHS choir room 104.

Hospitality: A director's lounge with refreshments will be provided in room 103 following the show.

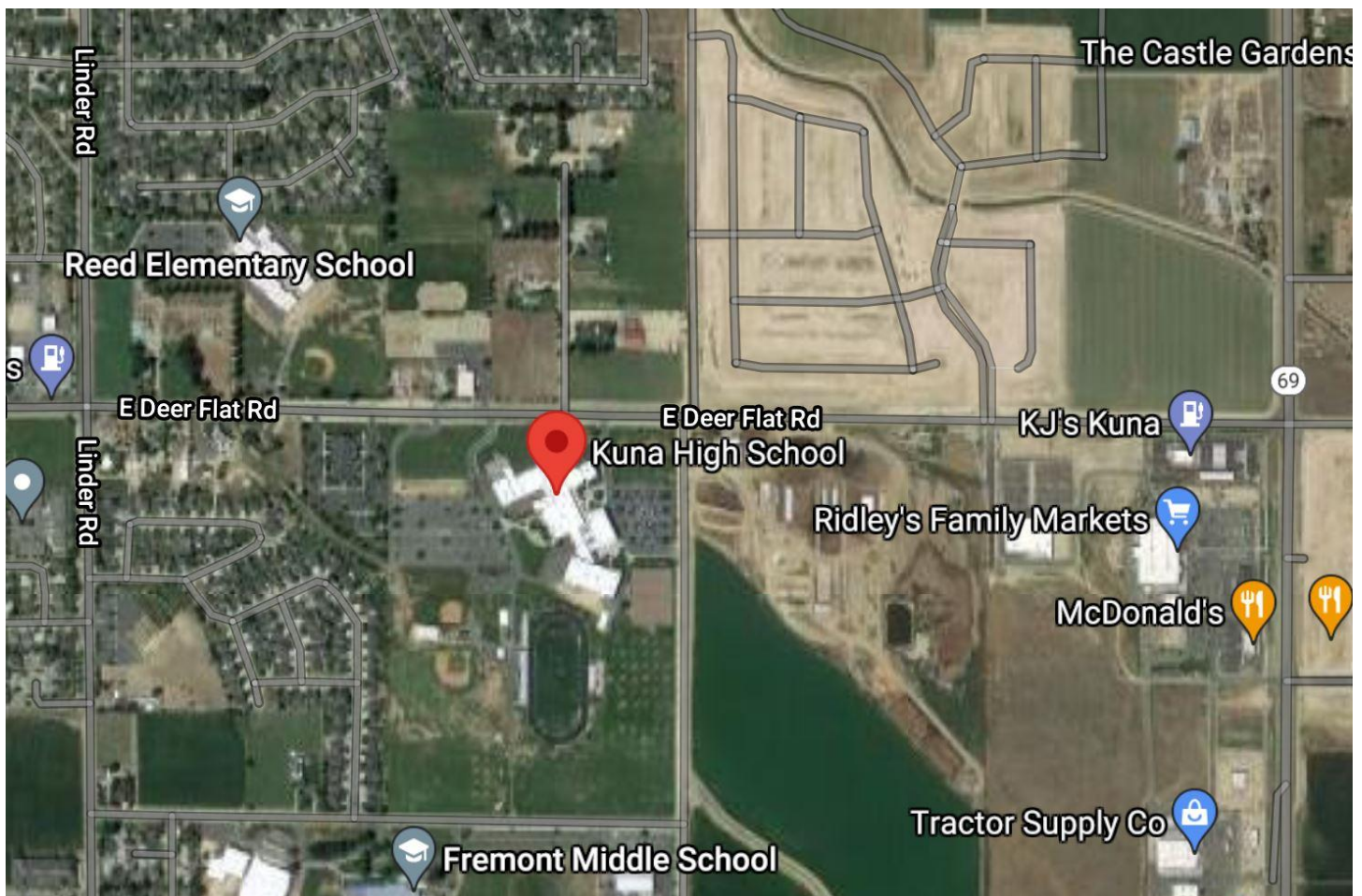
Awards: Trophies will be awarded for placement, and certificates will be provided for caption awards.

Credential Access: Band staff will have gate entry with their credentials. All band members will be given a wristband at registration. Judges, Band Directors and Event Staff will have access to the hospitality room (art room 103) with their credentials following the show. All other staff and volunteers must either have USBands credentials or purchase a gate admission. Please support our event!

DIRECTIONS

Kuna High School
637 East Deer Flat Road
Kuna, Idaho 83634

Meridian Road exit off of I-84. Turn south and then turn right onto Deer Flat Road. The high school will be on the south side of the road one block west of Meridian Road (ID-69).



SITE OVERVIEW

